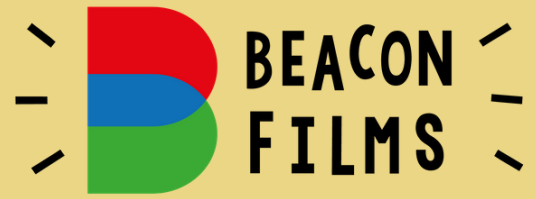


Inclusive Screen

Training & Consultancy

beaconfilms.org.uk/inclusivescreen

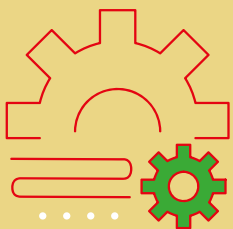


Be informed, be inclusive, be inspired

Do you want to increase the number of talented disabled professionals in both on and off-screen roles, and at all levels of your productions?

Beacon Films provide training & consultancy for funders, commissioners, and production companies.

Our introductory interactive workshops are designed and led by disabled, autistic and neurodivergent filmmakers.

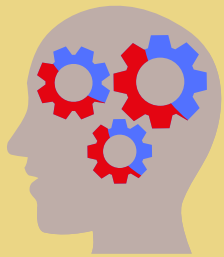


Interactive Introductory Workshop

- 4 hours (either 1 x 4 hrs with breaks, or 2 x 2 hrs), delivered online (via Zoom)

Topics include

- An introduction to disabled-led film and TV
- What is "Disability"? Medical and social models explained
- How to actively seek and engage disabled professionals
- "Reasonable Adjustments" and how to make them
- How you can make meaningful change straightaway



"It was great having a Beacon filmmaker co-lead the session. Their insight and personal experience was invaluable... I found it particularly useful going through specific case studies so we could understand how to turn information into action."

Amy O'Hara, BFI NETWORK Talent Executive, Film Hub North

For more information, course dates and prices visit
beaconfilms.org.uk/inclusivescreen